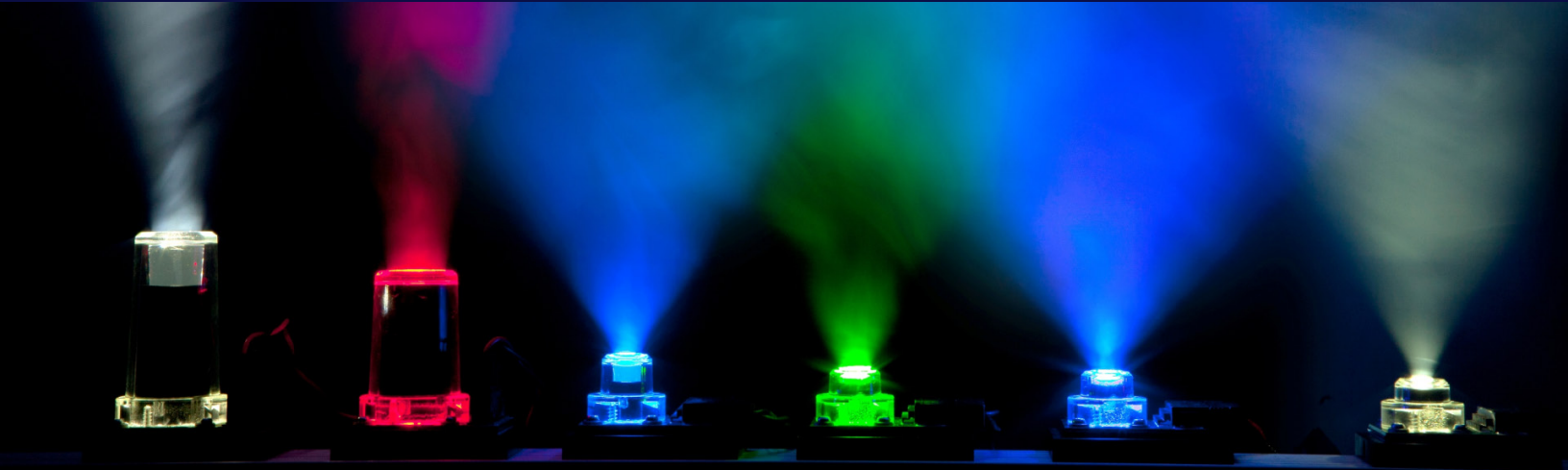


LumiBright™ Enhanced 5mm Aperture UV Compact Multispectral Light Engines



Features

- Longer lifetime
- Higher optical power
- > 20W*
- Compact, low cost
- Patented non-imaging optics
- 14 die array
- 5mm output diameter
- NA 0.60
- Half angle 37°
- Spectral range UV-VIS-NIR
- Single or multi- λ
- Uniform near & far fields
- CW or pulsed operation
- On-board thermistor

*Wavelength dependent and requires proper thermal management

Applications

- UV curing
- Photolithography
- Fiber-optic Coupling
- Machine Vision
- Fluorescence Excitation
- Replace Lasers & Arc Lamps

LumiBright™ 14 LED die enhanced light engines deliver high radiant power with longer lifetime in the same compact form factor as the traditional 2400B-4 series, but with a smaller 5mm beam like the 2400B-5 series. The output is enhanced by a patented internal reflective aperture “breaking the etendue barrier” which also enables longer lifetime via lower drive current per die. The patented primary optics are non-imaging concentrators with high collection

efficiency and compact form. The resulting homogenous beam requires no additional optics.

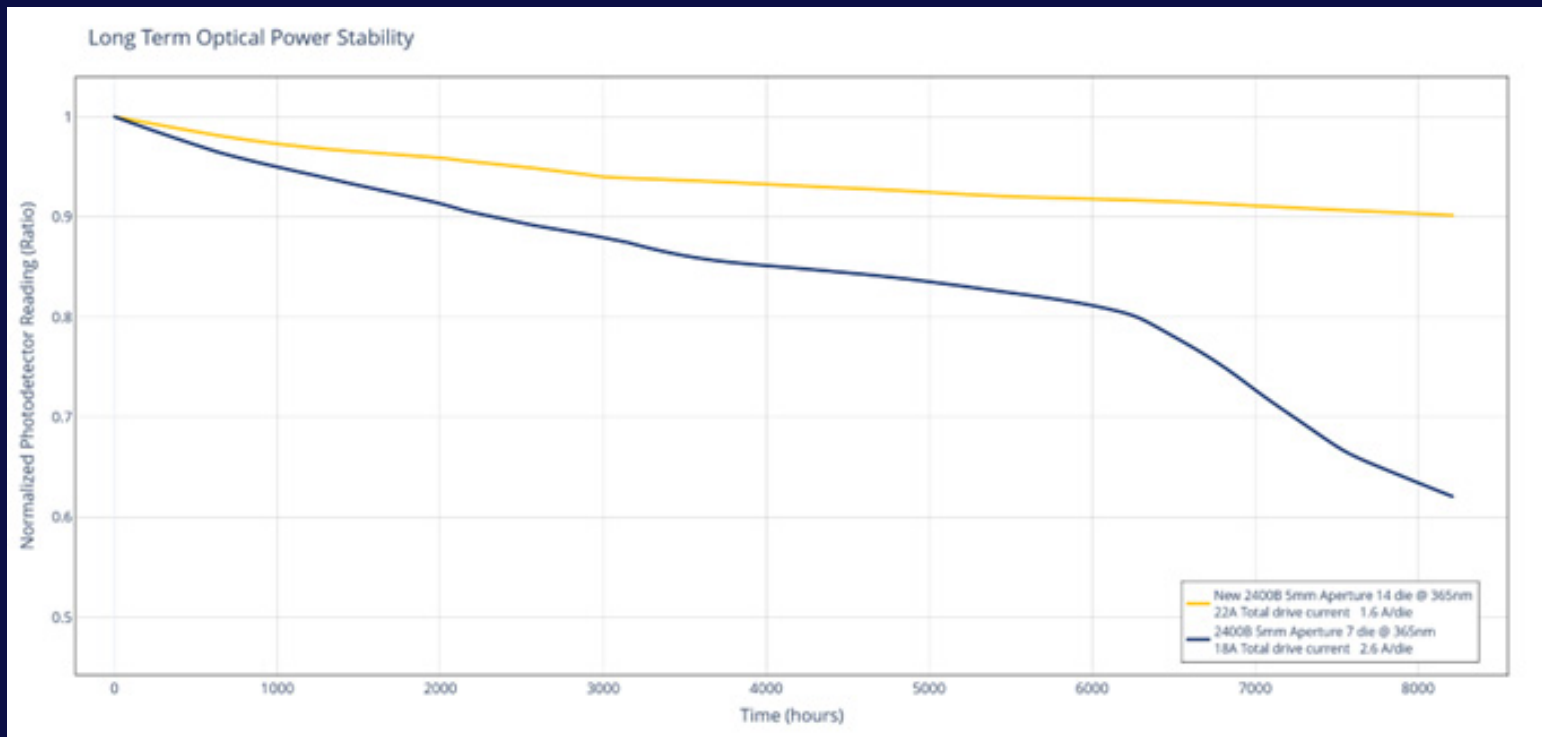
The LumiBright™ family of light engines offers multiple configurations – independently controlled, UV to NIR, single or multiple. COB LED technology with metallic PCB substrates offers excellent thermal performance with real-time temperature monitoring for closed-loop control.

UV LumiBright™ Enhanced Small Aperture 2400B-405-029 Performance

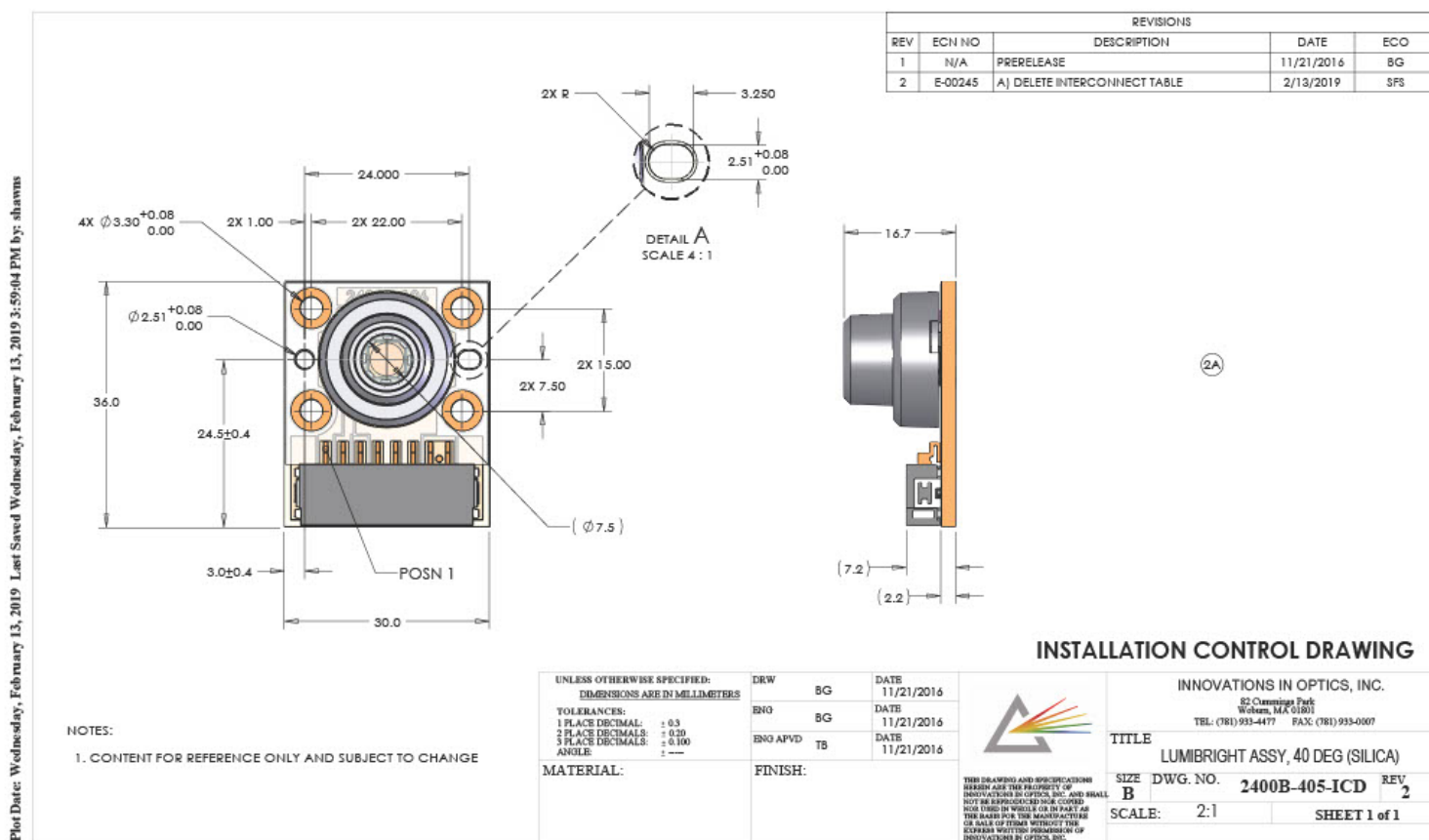
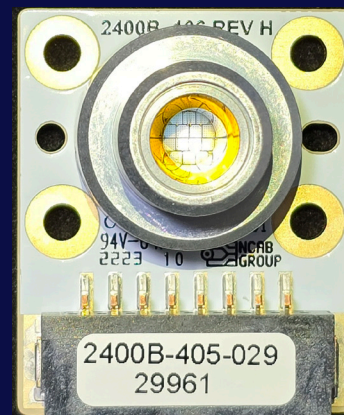
Total Drive Current 22A for 14 die (1.57A/die)

Less than 10% change over 10,400 hours with more output power compared to 7 die array (5 seconds on; 13 seconds off. Equivalent to 4,000 hours CW.)

Light recycling IP enables higher power and longer life (almost 2x optical power for same Amps/LED die)



-



3